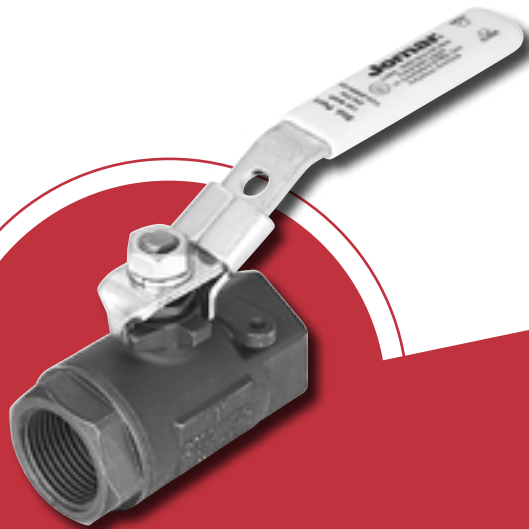


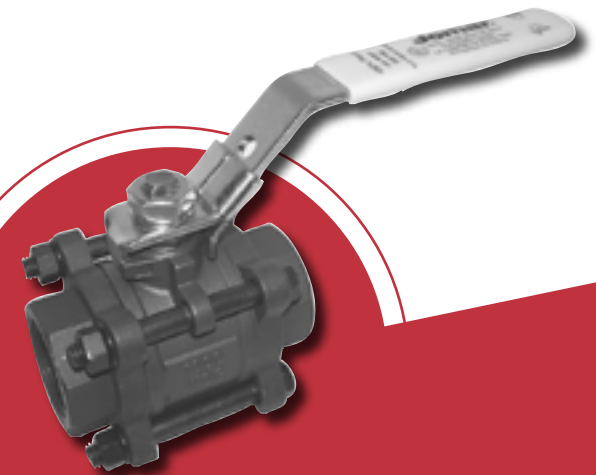
CARBON & STAINLESS STEEL Vented Ball Valves in Stock!



T-CS-2000N-SS-VB
Carbon Steel - 2000PSI - Reduced Port



T-SS-1001N-VB
Stainless Steel - 1000PSI - Full Port



T-SS-1000N-4B-VB
Stainless Steel - 4 bolt pattern

Jomar's NEW Vented Ball line of economical carbon & stainless steel ball valves allow frozen liquid to expand, thereby reducing the potential for damage. Each comes with lever latch handles.